

Consumer Tires Product Catalogue 2022



Triangle Tyre Europe

The European headquarters of Triangle Tyre is located in the city center of Milan in Italy, and it was established as part of the globalization move into all regions worldwide started in 2016 after the listing at the Shanghai stock exchange.

The European team can efficiently support all Triangle customers across the region in the commercial, marketing and technical areas, thanks to its managers' long experience in the industry.

This strategic investment is allowing Triangle Tyre to be closer to the market place and better understand the customers' needs, react to market changes and feed the market demand with dedicated modern product lines.

Communication and marketing activities enable Triangle to increase the brand awareness and become more attractive in the highly competitive European scenario.

Triangle has a wide product portfolio for all European businesses from consumer to industrial tires.

For passenger and light truck tires the Company has a comprehensive line-up of products from ultra-high performance to the latest generation of SUV including winter, all-season and top class studdable tires.

On the commercial side, Triangle offers a broad range of medium and heavy truck tires for the transport industry.

Triangle has a full range of Off-The-Road (OTR) radial and bias tires, including Giant radial tires for the construction, mining and aggregates industries.

Triangle's strategic approach is to establish mutually beneficial relationships with key tire distributors in every country worldwide and with millions of consumers who trust its tires every day in all types of driving conditions.

Part of an innovative and growing global Company

Triangle Tyre Europe is part of one of the leading tire manufacturers worldwide.

The Group's total annual production exceeds 25 million tires which are sold into approximately 180 countries.

Triangle invests a large percentage of its revenue in Research and Development (R&D) and in the upgrading of its production facilities.

Triangle tires are innovative and high-quality thanks to the Company's unswerving commitment to Research and Development, as well as utilization of advanced manufacturing technologies.

The Company boasts more than 360 patents, with research centers in Weihai (China), and Akron (USA).

Triangle's fully robotized production facility for passenger car tires is recognized as one of the benchmarks within the tire industry. Triangle's "smart" plants are in fact largely controlled by computer-integrated manufacturing systems to ensure the best quality control.

The Company is working on new technologies, new compounds and safety systems for products able to face every road condition, temperature and potential damages.

Triangle Tyre Company Overview

Headquartered in Weihai China.
 Founded in 1976, Triangle Tyre has become a leading tire manufacturer in China and one of the largest in the world.

6,400 Employees from all over the world	4 Manufacturing plants in China	2 R&D and Technical Centers in China and USA	180 Countries-Global presence
---	---	--	---

Triangle Tires Production

Current production output	Future production capacity
19 million PCR units	30 million PCR units
6,5 million TBR units	7 million TBR units
0,35 million Earth Mover units	0,5 million Earth Mover units

Stock Exchange listing

Triangle Tyre is among the largest tire manufacturers in the world and the 4th largest worldwide for OTR tires.
 Listed on the Shanghai Stock Exchange in September 2016.



Original Equipment



Manufacturing Excellence

World Most Advanced Manufacturing in PCR new plant

- Latest in manufacturing plant technology
- Modern operations for existing and new facilities

State-of-the-Art equipment and automation

- Green, clean, lean and safe manufacturing: Huamao solar panels arrays and water recycling system
- Automatic Building Machines: Upgraded VMI Exxium
- Cold Mixing Technology
- Production line with full integration of IT and intelligent solutions
- Automatic Warehouse System



R&D - China and USA

- Product development for replacement market
- OE for domestic vehicle manufacturers
- Business intelligence of current and future tire trends
- Developing advanced tire technology
- Technical interface for Marketing and Sales





UHP

SporteX TH201



PAGE 14



HP

AdvanteX TC101



PAGE 20

TE301 PROTRACT



PAGE 24

TR918



PAGE 26

TR928



PAGE 26

TR978



PAGE 27



SUV

SporteX TH201



PAGE 30

AdvanteX SUV TR259



PAGE 32

AdvanteX TR259



PAGE 35

TR257 SAPPHIRE



PAGE 36

TE301 PROTRACT



PAGE 36



4X4 ALL TERRAIN

AgileX AT TR292

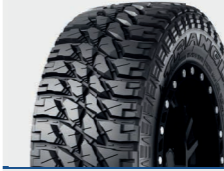


PAGE 40



4X4 MUD TERRAIN

GripX MT TR281



PAGE 46



VAN

ConneXVAN TV701



PAGE 50

TR652 MILEAGE PLUS



PAGE 52

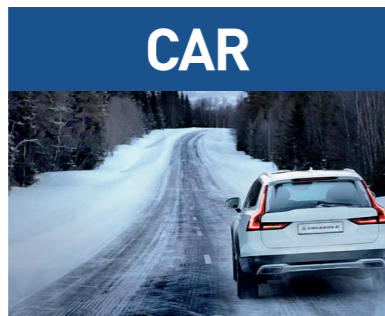
TR645



PAGE 53



ALL SEASON
CAR & SUV



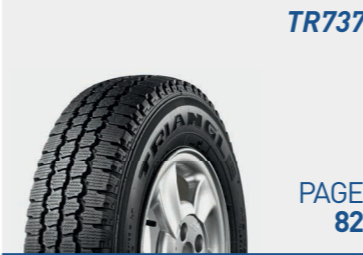
CAR



SUV



VAN



FRICTION



STUDDABLE



Sportex TH201

PAGE 14



- SporteX is the premium UHP summer tire that provides drivers with confidence and control to help them master the road
- Asymmetric pattern design for maximum cornering stability, straight stability and dry braking, offering the ultimate driving experience
- Balanced performances on dry and wet roads, combined with excellent driving control, comfort of ride and superb acoustic comfort

M+S



Features and Benefits



Three main central grooves with assisted lateral oblique groove

To maximize water drainage, resulting in good aquaplaning and wet grip performance.



Three silencer slots, high angle CL radial groove

For groove resonance reduction, resulting in reduced new and worn tire noise.



Asymmetric design with optimized pitch sequence

For improved management of lateral forces, resulting in improved cornering stability performance.

Optimized tread contact patch and large-block design

For large and even contact surface, resulting in improved dry handling performance.

Product Specifications

M+S



Segment	Width	Ratio	Rim	LI	SI	XL				Noise
CAR	255	30	19	91	Y	XL	D	C	B	73
CAR	265	30	19	93	Y	XL	C	C	B	73
CAR	275	30	19	96	Y	XL	D	C	B	73
CAR	295	30	19	100	Y	XL	C	C	B	75
CAR	225	30	20	85	Y	XL	D	C	B	72
CAR	245	30	20	90	Y	XL	D	C	B	72
CAR	255	30	20	92	Y	XL	D	C	B	73
CAR	265	30	20	94	Y	XL	D	C	B	73
CAR	275	30	20	97	Y	XL	C	C	B	73
CAR	275	30	21	98	Y	XL	C	C	B	73
CAR	255	30	22	95	Y	XL	C	C	B	73
CAR	215	35	18	84	Y	XL	D	C	B	72
CAR	245	35	18	92	Y	XL	D	C	B	72
CAR	255	35	18	94	Y	XL	C	C	B	73
CAR	265	35	18	97	Y	XL	C	C	B	73
CAR	215	35	19	85	Y	XL	D	C	B	72
CAR	225	35	19	88	Y	XL	C	C	B	72
CAR	235	35	19	91	Y	XL	C	C	B	72
CAR	245	35	19	93	Y	XL	C	C	B	72
CAR	255	35	19	96	Y	XL	C	C	B	73
CAR	265	35	19	98	Y	XL	D	C	B	73
CAR	275	35	19	100	Y	XL	C	C	B	73
CAR	225	35	20	90	Y	XL	C	C	B	72
CAR	235	35	20	92	Y	XL	C	C	B	72
CAR	245	35	20	95	Y	XL	C	C	B	72
CAR	255	35	20	97	Y	XL	C	C	B	73
CAR	265	35	20	99	Y	XL	C	C	B	73
CAR	275	35	20	102	Y	XL	C	C	B	73
CAR	265	35	22	102	Y	XL	C	C	B	73
CAR	205	40	16	83	W	XL	D	C	B	72
CAR	205	40	17	84	W	XL	D	C	B	72
CAR	215	40	17	87	Y	XL	D	C	B	72
CAR	245	40	17	91	Y	XL	D	C	B	71

Segment	Width	Ratio	Rim	LI	SI	XL				Noise
CAR	215	40	18	89	Y	XL	D	C	B	72
CAR	225	40	18	92	Y	XL	C	C	B	72
CAR	235	40	18	95	Y	XL	C	C	B	72
CAR	245	40	18	97	Y	XL	C	C	B	72
CAR	255	40	18	99	Y	XL	C	C	B	73
CAR	225	40	19	93	Y	XL	C	C	B	72
CAR	235	40	19	96	Y	XL	C	C	B	72
CAR	245	40	19	98	Y	XL	C	C	B	72
CAR	255	40	19	100	Y	XL	C	C	B	73
CAR	275	40	19	105	Y	XL	C	C	B	73
CAR	245	40	20	95	Y		C	C	B	71
CAR	265	40	20	104	W	XL	D	C	B	73
CAR	195	45	16	84	W	XL	D	C	B	72
CAR	205	45	16	87	W	XL	D	C	B	72
CAR	215	45	16	90	V	XL	C	C	B	72
CAR	205	45	17	88	Y	XL	D	C	B	72
CAR	215	45	17	91	Y	XL	D	C	B	72
CAR	225	45	17	94	Y	XL	C	C	B	72
CAR	235	45	17	97	Y	XL	C	C	B	72
CAR	245	45	17	99	Y	XL	C	C	B	72
CAR	215	45	18	93	Y	XL	C	C	B	72
CAR	225	45	18	95	Y	XL	C	C	B	72
CAR	235	45	18	98	Y	XL	C	C	B	72
CAR	245	45	18	100	Y	XL	C	C	B	72
CAR	255	45	18	103	Y	XL	C	C	B	73
CAR	225	45	19	96	Y	XL	C	C	B	72
CAR	235	45	19	99	W	XL	C	C	B	72
CAR	245	45	19	102	Y	XL	C	C	B	72
CAR	205	50	16	91	W	XL	C	C	B	72
CAR	225	50	16	96	W	XL	C	C	B	72
CAR	205	50	17	93	Y	XL	C	C	B	72
CAR	215	50	17	95	Y	XL	C	C	B	72
CAR	225	50	17	98	Y	XL	D	C	B	72
CAR	235	50	17	100	Y	XL	C	C	B	72
CAR	235	50	19	103	W	XL	C	C	B	72
CAR	205	55	16	91	V		C	C	B	72
CAR	205	55	16	94	W	XL	C	C	B	72
CAR	215	55	16	97	W	XL	C	C	B	72
CAR	215	55	17	94	Y		D	C	B	71
CAR	225	55	17	101	Y	XL	C	C	B	72

AdvanteX TC101

PAGE 20



PROTRACT TE301

PAGE 24



TR918

PAGE 26



TR928

PAGE 26



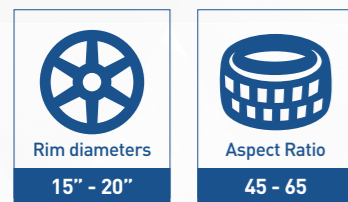
TR978

PAGE 27



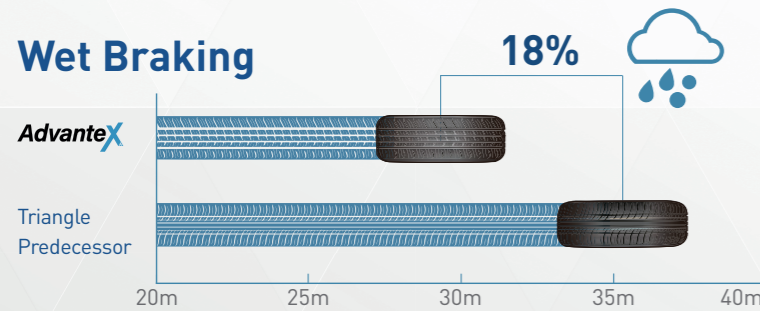
- Advantex TC101 is the pattern designed to blend performance, comfort and safety
- The mix of new tread pattern and compound technology leads to an exceptional all round performer in all conditions

M+S

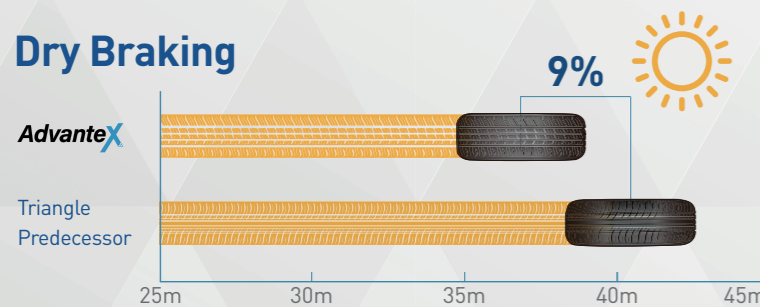


Performance

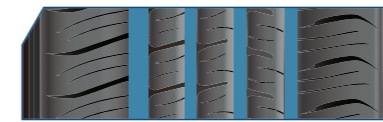
Wet Braking



Dry Braking



Features and Benefits



Four deep circumferential grooves

For excellent water drainage and reduced aquaplaning, resulting in improved wet handling and braking.



Large shoulder blocks with unique shape

For enhanced shoulder stiffness and improved stability, resulting in better cornering in wet and dry conditions.



High sipes density

For increased biting edges and water dispersion, resulting in improved wet handling and braking.



Closed groove design

Traps noise generated from the center of the tire, resulting in a quieter and more comfortable ride.



Functionalized polymer and high content silica in combination with white carbon black

For a reduction in tread deformation and lower rolling resistance, resulting in improved traction, wet handling, braking and fuel efficiency.



Optimized high density polyester matrix structure design

For more robust and stable carcass, resulting in better steering and handling response.

Product Specifications

M+S

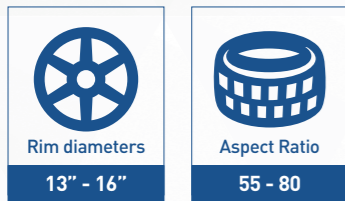
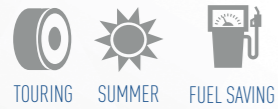


Segment	Width	Ratio	Rim	LI	SI	XL				Noise
CAR	185	45	15	75	V		D	C	B	70
CAR	195	50	15	86	V	XL	D	C	B	72
CAR	185	50	16	81	V		D	C	B	70
CAR	195	50	16	88	V	XL	D	C	B	72
CAR	205	50	16	87	W		D	C	B	71
CAR	205	50	17	93	W	XL	D	C	B	72
CAR	215	50	17	95	Y	XL	D	C	B	72
CAR	225	50	17	98	Y	XL	C	C	B	72
CAR	235	50	17	100	W	XL	C	C	B	72
CAR	245	50	17	99	Y		D	C	B	71
CAR	185	55	15	82	V		D	C	B	70
CAR	195	55	15	85	V		D	C	B	71
CAR	205	55	15	88	W		D	C	B	71
CAR	185	55	16	87	V	XL	D	C	B	71
CAR	195	55	16	87	V		D	C	B	71
CAR	205	55	16	91	V		D	C	B	71
CAR	215	55	16	97	W	XL	C	C	B	72
CAR	225	55	16	99	W	XL	C	C	B	72
CAR	205	55	17	95	W	XL	D	C	B	72
CAR	215	55	17	98	W	XL	C	C	B	72
CAR	225	55	17	101	W	XL	C	C	B	72
CAR	205	55	19	97	V	XL	D	C	B	72
CAR	195	55	20	95	H	XL	C	C	B	72
CAR	185	60	15	88	H	XL	C	C	B	71
CAR	195	60	15	88	V		D	C	B	71
CAR	205	60	15	95	V	XL	C	C	B	72
CAR	185	60	16	86	H		D	C	B	70

Segment	Width	Ratio	Rim	LI	SI	XL				Noise
CAR	195	60	16	89	V		D	C	B	71
CAR	205	60	16	96	V	XL	C	C	B	72
CAR	215	60	16	99	V	XL	C	C	B	72
CAR	225	60	16	102	V		C	C	B	72
CAR	185	65	15	88	H		D	C	B	70
CAR	195	65	15	91	H		D	C	B	71
CAR	195	65	15	91	V		D	C	B	71
CAR	205	65	15	94	V		D	C	B	71
CAR	215	65	15	96	V		C	C	B	71
CAR	205	65	16	95	H		D	C	B	71

- Protract TE301 is designed to match vehicle's economic performance and it provides extra miles that keeps you going safely
- Uniform tread wear provides long mileage and good worn noise
- Low rolling noise ensures comfortable driving experience

M+S



Features and Benefits



Four main central grooves with narrow shoulder block

For improved grip performance during wet braking, resulting in shorter braking distances and increased safety.



Rib type pattern and solid center line longitudinal ribs

For high rubber volume and stiffer centerline, resulting in optimum mileage and precise handling.



Advanced digital simulation for optimize tread design

To improve footprint pressure distribution, resulting in reduced rolling resistance and fuel economy.

Product Specifications

Segment	Width	Ratio	Rim	LI	SI	XL				Noise
CAR	205	55	16	94	V		C	C	B	70
CAR	165	60	14	75	H		D	D	B	70
CAR	185	60	14	82	H		D	C	B	70
CAR	195	60	14	86	H		D	C	B	71
CAR	175	60	15	81	H		D	C	B	70
CAR	235	60	16	100	H		C	C	B	71
CAR	165	65	13	77	T		D	D	B	70
CAR	165	65	14	79	H		D	D	B	70
CAR	175	65	14	82	T		D	C	B	70
CAR	175	65	14	86	H	XL	D	C	B	71
CAR	185	65	14	86	H		D	C	B	70
CAR	165	65	15	81	H		D	D	B	70
CAR	175	65	15	84	H		D	C	B	70
CAR	195	65	15	95	V	XL	C	C	B	72
CAR	215	65	15	100	H	XL	C	C	B	72
CAR	215	65	16	98	H		C	C	B	71
CAR	165	70	13	79	T		D	D	B	70
CAR	175	70	13	82	H		D	C	B	70
CAR	185	70	13	86	T		D	C	B	70
CAR	165	70	14	85	T	XL	D	D	B	71
CAR	175	70	14	88	H	XL	D	C	B	71
CAR	185	70	14	88	H		D	C	B	70
CAR	195	70	14	95	H	XL	D	C	B	72
CAR	205	70	15	96	H		D	C	B	71
CAR	175	80	14	88	H		D	C	B	70

TR918

- Optimized asymmetric pattern design for fuel efficiency
- Performance and safety of driving due to advanced sidewall system
- Good aquaplaning and braking on wet thanks to central and lateral oblique grooves



M+S

Rim diameters
15"

Aspect Ratio
50 - 60



Product Specifications

Segment	Width	Ratio	Rim	LI	SI	XL				Noise
CAR	205	50	15	89	V	XL	D	C	B	72
CAR	215	60	15	98	H	XL	C	C	B	72

TR928

- Specifically designed to maximize driver's daily commuting cost
- High mileage performance and durable structure matching the driving environments



M+S

Rim diameters
13" - 15"

Aspect Ratio
65 - 80



Product Specifications

Segment	Width	Ratio	Rim	LI	SI	XL				Noise
CAR	185	65	15	92	H	XL	D	C	B	71
CAR	155	70	13	75	T		D	D	B	70
CAR	155	80	13	79	T		D	D	B	70

TR978

- Braking performance and comfort of ride
- Increased acoustic comfort thanks to straight pattern rib
- Reduced rolling resistance for fuel saving thanks to innovative shoulder blocks pattern
- Improved resistance to aquaplaning thanks to four straight circumferential grooves



M+S

Rim diameters
14" - 16"

Aspect Ratio
50 - 65



Product Specifications

Segment	Width	Ratio	Rim	LI	SI	XL				Noise
CAR	175	50	15	75	H		D	D	B	70
CAR	155	65	14	75	H		D	D	B	70
CAR	195	65	16	92	H		D	C	B	71

SporteX TH201

PAGE 30



AdvanteX SUV TR259

PAGE 32



AdvanteX TC101

PAGE 35



SAPPHIRE TR257

PAGE 36



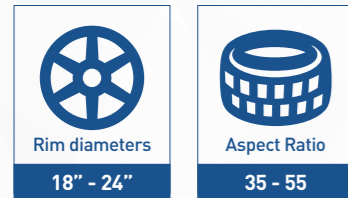
PROTRACT TE301

PAGE 36



- Sport performance for modern SUV's up to 24 inch
- Driving control and comfort
- Excellent handling performance
- Wet grip and excellent water drainage due to ultimate tread design with central and oblique lateral grooves

M+S

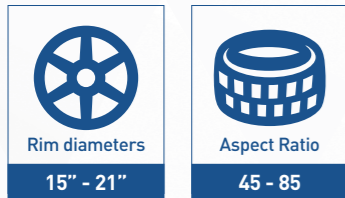


Product Specifications

Segment	Width	Ratio	Rim	LI	SI	XL				Noise
SUV	315	35	20	110	Y	XL	C	C	B	72
SUV	295	35	21	107	Y	XL	C	C	B	75
SUV	295	35	24	110	W	XL	C	C	B	75
SUV	305	35	24	112	W	XL	C	C	B	75
SUV	255	40	20	101	Y	XL	C	C	B	73
SUV	275	40	20	106	Y	XL	C	C	B	73
SUV	255	40	21	102	Y	XL	C	C	B	73
SUV	265	40	21	105	Y	XL	C	C	B	73
SUV	275	40	21	107	Y	XL	C	C	B	73
SUV	275	40	22	108	Y	XL	C	C	B	73
SUV	255	45	19	104	Y	XL	C	C	B	73
SUV	275	45	19	108	Y	XL	C	C	B	73
SUV	285	45	19	111	Y	XL	C	C	B	75
SUV	235	45	20	100	Y	XL	C	C	B	72
SUV	245	45	20	103	Y	XL	C	C	B	72
SUV	255	45	20	105	Y	XL	C	C	B	73
SUV	265	45	20	108	Y	XL	C	C	B	73
SUV	275	45	20	110	Y	XL	C	C	B	73
SUV	275	45	21	110	Y	XL	C	C	B	73
SUV	225	50	18	99	W	XL	C	C	B	72
SUV	245	50	18	104	Y	XL	C	C	B	72
SUV	255	50	18	106	V	XL	C	C	B	73
SUV	255	50	19	107	Y	XL	C	C	B	73
SUV	265	50	19	110	Y		B	C	B	73
SUV	245	50	20	105	V	XL	B	C	B	72
SUV	255	50	20	109	Y	XL	C	C	B	73
SUV	265	50	20	111	Y		B	C	B	73
SUV	215	55	18	99	W	XL	C	C	B	72
SUV	225	55	18	102	W	XL	C	C	B	72
SUV	235	55	20	105	V	XL	C	C	B	72
SUV	255	55	20	110	V	XL	B	C	B	73

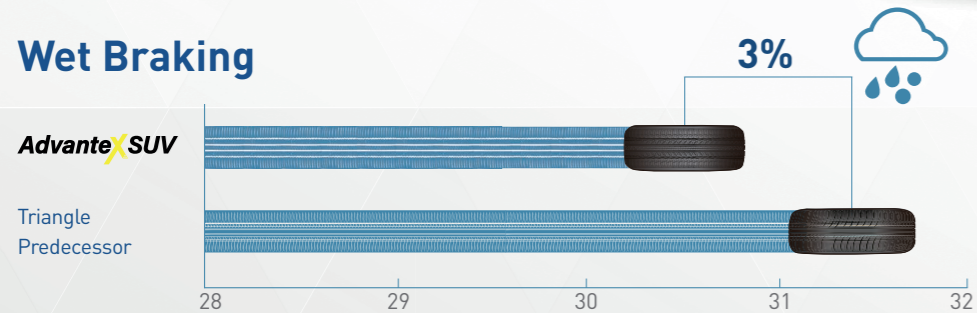
- Excellent all-round performer designed for modern SUV's
- The mix of new tread pattern and compound technology applied to the fast-growing segment of SUV has brought to comfort, fuel efficiency and braking performance in all road conditions

M+S

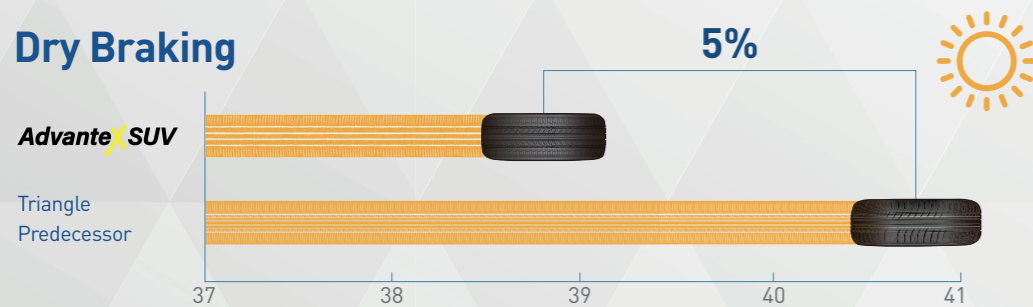


Performance

Wet Braking



Dry Braking

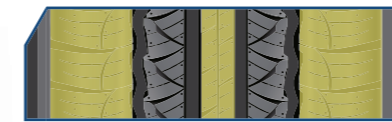


Features and Benefits



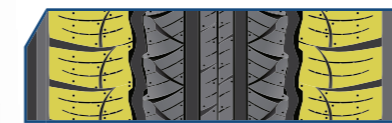
Five rib tread design

For maximum surface contact and even bear loading, resulting in balanced wet and dry handling performance.



Additional shoulder and intermediate rib slot

For improved shoulder stability and better water drainage efficiency, resulting in confident wet/dry and light snow handling performance.



Closed and supported shoulder slots

For a balanced wet/dry noise performance and handling, resulting in a quieter and more comfortable ride.



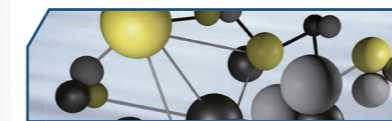
Strategically placed sipe/blade density

For increased biting edges and water dispersion, resulting in improved wear performance with comfort and good wet/light snow performance.



Reinforced high reversed carcass structure

For a reduction in carcass deformation and enhanced sidewall strength, resulting in improved durability and driving stability.



Optimized silica tread formula compound

For lower rolling resistance, reduced irregular wear and shorter braking distance, resulting in improved fuel efficiency, quiet and comfortable driving.

Product Specifications




Segment	Width	Ratio	Rim	LI	SI	XL				Noise
SUV	255	45	21	102	W	XL	C	C	B	72
SUV	275	45	21	110	Y	XL	C	C	B	73
SUV	215	50	18	92	W		D	C	B	71
SUV	225	50	18	99	Y	XL	C	C	B	72
SUV	235	50	18	97	V		D	C	B	71
SUV	255	50	19	107	V	XL	D	C	A	70
SUV	265	50	20	111	Y		B	C	B	73
SUV	275	50	20	113	W	XL	C	C	B	73
SUV	285	50	20	116	W	XL	C	C	A	72
SUV	235	55	17	103	V		D	C	B	72
SUV	275	55	17	109	V		C	C	B	70
SUV	215	55	18	95	V		D	C	B	71
SUV	225	55	18	102	W	XL	C	C	B	72
SUV	235	55	18	104	V	XL	D	C	B	72
SUV	255	55	18	109	W		C	C	B	73
SUV	225	55	19	99	V		D	C	B	71
SUV	235	55	19	105	W	XL	C	C	B	72
SUV	255	55	19	111	W	XL	C	C	B	73
SUV	275	55	20	117	W	XL	C	C	B	73
SUV	235	60	16	100	H		D	C	B	71
SUV	215	60	17	96	H		D	C	B	71
SUV	225	60	17	99	V		D	C	B	71
SUV	235	60	17	102	V		D	C	B	71
SUV	275	60	17	110	H		C	C	B	72
SUV	225	60	18	104	W	XL	C	C	B	72
SUV	235	60	18	107	W	XL	C	C	B	72
SUV	245	60	18	105	H		C	C	B	71
SUV	255	60	18	112	V	XL	C	C	B	73

Segment	Width	Ratio	Rim	LI	SI	XL				Noise
SUV	265	60	18	114	V	XL	C	C	B	73
SUV	285	60	18	120	V	XL	B	C	B	75
SUV	255	60	19	109	V		C	C	B	72
SUV	275	60	20	115	H		C	C	B	72
SUV	215	65	16	102	V	XL	D	C	B	72
SUV	215	65	17	99	V		D	C	B	71
SUV	225	65	17	106	V	XL	C	C	B	72
SUV	235	65	17	108	V	XL	C	C	B	72
SUV	245	65	17	111	H	XL	C	C	B	72
SUV	235	65	18	106	H		D	C	B	71
SUV	255	65	18	111	H		C	C	B	72
SUV	265	65	18	114	H		C	C	B	72
SUV	275	65	18	116	H		C	C	B	72
SUV	225	70	15	100	H		D	C	B	71
SUV	235	70	15	107	H	XL	D	C	B	72
SUV	255	70	15	108	H		C	C	B	72
SUV	215	70	16	100	H		D	C	B	71
SUV	225	70	16	103	H		D	C	B	71
SUV	235	70	16	106	H		D	C	B	71
SUV	245	70	16	111	H	XL	C	C	B	72
SUV	265	70	16	112	H		D	C	B	72
SUV	245	70	17	114	H	XL	C	C	B	72
SUV	265	70	17	115	H		C	C	B	72
SUV	255	70	18	116	H	XL	C	C	B	73
SUV	205	75	15	102	H	XL	D	C	B	72
SUV	215	75	15	100	H		D	C	B	71
SUV	225	75	15	106	H	XL	D	C	B	72
SUV	245	75	16	114/111	S		D	C	B	72
SUV	265	75	16	116	S		C	C	B	72
SUV	215	85	16	115/112	S		D	C	B	72
SUV	235	85	16	120/116	S		D	C	B	72


- Fuel efficiency, comfort and mileage for today's SUV vehicles
- AdvanteX TC101 SUV extension offers excellent braking performance, stability and better cornering in wet and dry conditions
- Optimized structure design for good steering and handling response

M+S






Rim diameters
16" - 17"



Aspect Ratio
60 - 65

Segment	Width	Ratio	Rim	LI	SI	XL				Noise
SUV	215	60	17	96	V		C	C	B	71
SUV	235	60	17	106	W	XL	C	C	B	72
SUV	215	65	16	102	H	XL	C	C	B	72
SUV	215	65	17	103	W	XL	D	C	B	72

- High frequency of pitches to prevent irregular wear
- Good comfort and handling thanks to smaller shoulder grooves
- Central large circumferential grooves allow steering precision and straight line driving
- Great shock absorption due to optimized cavity profile

M+S








Rim diameters
15" - 19"



Aspect Ratio
55 - 75



Product Specifications

Segment	Width	Ratio	Rim	LI	SI	XL				Noise
SUV	245	55	19	103	V		D	C	B	71
SUV	265	65	17	112	H		D	C	B	72
SUV	255	70	15	108	T		D	C	B	72
SUV	235	75	15	105	H		D	C	B	71
SUV	245	75	16	111	H		D	C	B	71


- Stiffer centerline and solid longitudinal ribs for higher mileage and precise handling
- Narrow shoulder blocks to reduce braking distance and increase safety
- Digital simulation of tread wear to reduce rolling resistance and increase fuel efficiency

M+S







Rim diameters
15" - 17"



Aspect Ratio
65 - 70



Product Specifications

Segment	Width	Ratio	Rim	LI	SI	XL				Noise
SUV	225	65	17	102	H		C	D	B	71
SUV	215	70	15	98	H		C	C	B	71
SUV	225	70	15	100	T		C	C	B	71

Agile^XAT TR292

PAGE 40

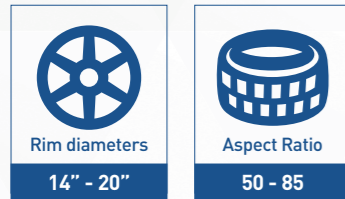


- The AgileX All Terrain tire: toughness , traction and mileage
- The tire developed to address the growing market for balanced on and off-road performance and for consumers wanting the flexibility of great on and off-road mileage
- The AgileX All Terrain delivers agility in all conditions
- Full range able to cover all light truck sizes

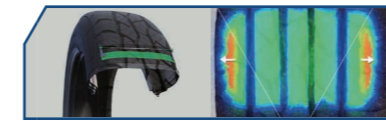
M+S



4X4 ALL TERRAIN ROBUST



Features and Benefits



Optimized belt angle and width

For better footprint distribution, resulting in increased tread stability with better handling.



Strengthened shoulder block with intermediate slot design

For increased rigidity, resulting in reduced ride noise and avoiding uneven wearing.



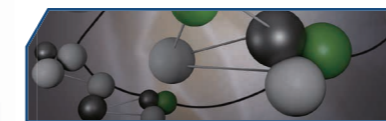
Large shoulder slots design

For increased gripping and dispensing efficiency, resulting in confident off-road traction performance.



4 main rib grooves design, deep sipe and wide shoulder

For efficient water dispersion and drainage, resulting in good handling and wet braking performance.



Balanced on/off road compound

For absorbing road vibration and balanced performance on paved / unpaved roads, resulting in excellent driving performance and low noise.



High sidewall ply turn-up

For a reduction in carcass deformation and enhanced sidewall strength, resulting in increased resistance to sidewall damage.

Product Specifications

M+S



Segment	Width	Ratio	Rim	LI	SI	XL				Noise
4X4	205	60	16	110/108	T		D	B	B	72
4X4	265	50	20	111	T		D	C	B	73
4X4	255	55	18	109	H	XL	D	C	B	73
4X4	275	55	20	117	T	XL	D	C	B	72
4X4	205	60	15	91	H		D	C	B	71
4X4	205	60	16	92	H		D	C	B	71
4X4	235	60	18	103	T		D	C	B	71
4X4	265	60	18	114	H	XL	D	C	B	73
4X4	275	60	20	115	T		D	C	B	72
4X4	205	65	15	94	H		D	C	B	71
4X4	235	65	16	107	T		D	C	B	72
4X4	225	65	17	106	T	XL	D	C	B	72
4X4	235	65	17	104	T		D	C	B	71
4X4	245	65	17	111	T	XL	D	C	B	72
4X4	255	65	17	110	H		D	C	B	72
4X4	265	65	17	112	S		D	C	B	72
4X4	275	65	18	116	H		D	C	B	73
4X4	175	70	14	88	H	XL	C	C	B	71
4X4	205	70	15	96	T		D	C	B	71
4X4	235	70	15	103	H		D	C	B	71
4X4	215	70	16	100	T		D	C	B	71
4X4	225	70	16	103	T		D	C	B	71
4X4	235	70	16	106	S		D	C	B	71
4X4	245	70	16	111	S	XL	D	C	B	72
4X4	255	70	16	115	T	XL	C	C	B	73
4X4	265	70	16	112	S		D	C	B	72
4X4	265	70	16	117/114	S		D	B	B	72

Segment	Width	Ratio	Rim	LI	SI	XL				Noise
4X4	225	70	17	108	S		D	C	B	72
4X4	245	70	17	110	S		D	C	B	71
4X4	245	70	17	114/110	S		D	B	B	72
4X4	265	70	17	115	S		D	C	B	72
4X4	265	70	17	121/118	S		D	B	B	71
4X4	275	70	17	114/110	T		D	B	B	72
4X4	285	70	17	117	T		D	C	B	72
4X4	215	75	15	100	S		D	C	B	71
4X4	225	75	15	110/108	S		D	B	B	72
4X4	235	75	15	109	S	XL	D	C	B	72
4X4	235	75	15	110/107	S		D	B	B	72
4X4	225	75	16	108	Q	XL	D	C	B	72
4X4	225	75	16	115/112	T		D	B	B	72
4X4	245	75	16	111	Q		D	C	B	71
4X4	245	75	16	120/116	S		D	B	B	72
4X4	265	75	16	116	S		D	C	B	72
4X4	245	75	17	112	R		D	C	B	71
4X4	215	85	16	115/112	R		D	B	B	72
4X4	235	85	16	120/116	Q		D	B	B	72
4X4	31	10.5	15	109	S		C	B	B	72
4X4	30	9.5	15	104	S		D	B	B	72

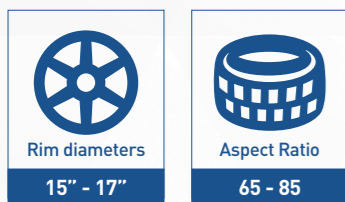
GripXMT TR281

PAGE 46



- Reinforced shoulder block design with large oblique grooves for improved driving control, great traction in sandy and muddy conditions
- Shoulder and sidewall for greater protection from rocks and fallen branches
- Wide zig-zag grooves for superior off-road performance for enhanced climbing ability and steering stability on and off road
- Optimized silica compound for reduced tread deformation

M+S



Product Specifications

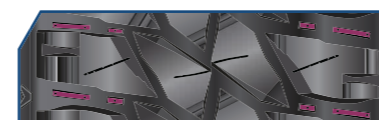
Segment	Width	Ratio	Rim	LI	SI	XL	P.O.R. (Professional Off Road)
4X4	265	65	17	120/117	Q		✓
4X4	265	70	17	118/115	Q		✓
4X4	235	75	15	104/101	Q		✓
4X4	225	75	16	115/112	Q	XL	✓
4X4	245	75	16	120/116	Q		✓
4X4	235	85	16	120/116	Q		✓
4X4	30	9.5	15	104	Q		✓

Features and Benefits



Aggressive block design with large shoulder grooves

For extreme off-road grip, resulting in superior off-road performance.



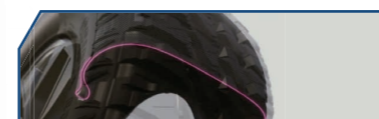
Strategically placed stone ejectors

For release of trapped stones and mud, resulting in high traction and preventing damage.



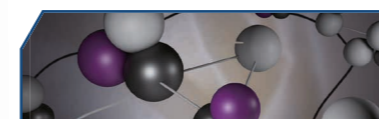
Stair step block face design

For aggressive gripping and climbing capability, resulting in greater bite for off-road traction in sandy and muddy conditions.



Reinforced high strength carcass structure

For enhanced climbing ability and steering stability on and off-road, resulting in effective prevention of damage.



New advanced tread compound featuring functional polymers in combination with natural rubber

For increased durability, self cleaning and high carrying capacity, resulting in improved resistance to tearing and punching.



High sidewall turn-up

For improved sidewall strength, resulting in prevention of sidewall damage.

ConneXVAN TV701

PAGE 50



MILEAGE PLUS TR652

PAGE 52



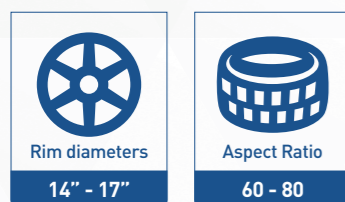
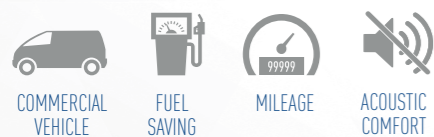
TR645

PAGE 53



- The latest born in Triangle Van segment, developed for the modern light Commercial vehicles with high load capacities and powerful engines
- High-density continuous block pattern able to reduce the tread deformation and providing excellent mileage performance
- Special groove strengthening design to prevent groove cracking
- Excellent acoustic comfort

M+S



Product Specifications

Segment	Width	Ratio	Rim	LI	SI				Noise
VAN	195	60	16	99/97	H	C	B	B	72
VAN	215	60	16	103/101	H	C	B	B	72
VAN	215	60	16	108/106	T	C	B	B	72
VAN	215	60	17	109/107	T	B	B	B	72
VAN	175	65	14	90/88	T	D	B	B	72
VAN	205	65	15	102/100	T	C	B	B	72
VAN	215	65	15	104/102	T	C	B	B	72
VAN	195	65	16	104/102	T	C	B	B	72
VAN	205	65	16	107/105	T	C	B	B	72
VAN	215	65	16	109/107	T	C	B	B	72
VAN	225	65	16	112/110	T	B	B	B	72
VAN	235	65	16	115/113	S	B	B	B	72
VAN	165	70	14	89/87	S	D	B	B	72
VAN	175	70	14	95/93	T	D	B	B	72
VAN	195	70	15	104/102	S	C	B	B	72
VAN	205	70	15	106/104	S	C	B	B	72

Segment	Width	Ratio	Rim	LI	SI				Noise
VAN	215	70	15	109/107	S	C	B	B	72
VAN	225	70	15	112/110	S	C	B	B	72
VAN	255	70	15	112/110	S	C	B	B	72
VAN	215	70	16	108/106	T	C	B	B	72
VAN	215	75	15	100/97	S	C	B	B	72
VAN	185	75	16	104/102	T	C	B	B	72
VAN	195	75	16	110/108	T	C	B	B	72
VAN	205	75	16	113/111	T	C	B	B	72
VAN	215	75	16	116/114	S	C	B	B	72
VAN	225	75	16	121/120	S	B	B	B	72
VAN	185		14	102/100	S	D	B	B	72
VAN	195		14	106/104	R	B	B	B	72
VAN	215		14	112/110	R	C	B	B	72
VAN	185		15	103/102	R	C	B	B	72
VAN	195		15	106/104	S	C	B	B	72

Features and Benefits



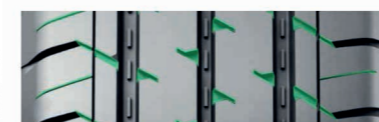
High-density continuous block pattern

More tread rubber and less tread deformation, resulting in increased wear resistance.



Special grooves design

Reinforced groove strength, resulting in improved load capacity and reduction in groove cracking.



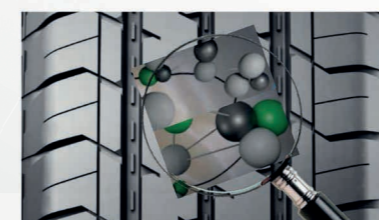
Visual digital noise filtering technology with lateral oblique grooves

For reduced pattern noise, resulting in good acoustic comfort.



Optimized groove design

Enhanced water drainage, resulting in excellent braking and handling in wet conditions.



Multi-functional rubber with high reinforcing filler compound design

Cooler running and improved wear resistance, whilst delivering excellent wet breaking. Excellent mileage in varying road and surface conditions coupled with improved fuel economy and safety.

- Light commercial vehicle tire designed to meet driver expectations for high durability and value-added products
- Deeper shoulder grooves provides the suitability for four seasons
- Steel blade sipe design providing excellent grip and control in wet road condition



M+S

Rim diameters
13" - 16"

Aspect Ratio
65 - 80



Product Specifications

Segment	Width	Ratio	Rim	LI	SI				Noise
VAN	175	65	14	90/88	T	D	C	B	72
VAN	195	65	15	98/96	T	D	C	B	72
VAN	195	65	16	104/102	T	D	C	B	72
VAN	205	65	16	107/105	T	C	C	B	72
VAN	215	65	16	109/107	T	C	C	B	72
VAN	225	65	16	112/110	R	C	C	B	72
VAN	195	70	15	104/102	S	C	C	B	72
VAN	205	70	15	106/104	S	D	C	B	72
VAN	215	70	15	109/107	R	C	C	B	72
VAN	225	70	15	112/110	R	D	C	B	72
VAN	215	75	14	112/110	R	D	C	B	72
VAN	195	75	16	107/105	R	D	C	B	72
VAN	205	75	16	110/108	R	C	C	B	72
VAN	215	75	16	116/114	S	D	C	B	72
VAN	225	75	16	116/114	Q	C	C	B	72
VAN	165		13	94/93	Q	D	C	B	72
VAN	165		14	91/90	S	D	C	B	72
VAN	175		14	99/98	Q	D	C	B	72
VAN	185		14	102/100	R	D	C	B	72
VAN	205		14	109/107	Q	C	C	B	72

- Reduced fuel consumption thanks to optimized asymmetric pattern design
- Performance and safety of driving due to advanced sidewall system
- Good aquaplaning and braking on wet thanks to central and lateral oblique grooves



M+S

Rim diameters
14" - 15"

Aspect Ratio
70 - 80



Product Specifications

Segment	Width	Ratio	Rim	LI	SI				Noise
VAN	195	70	15	104/102	R	D	C	B	72
VAN	185		14	102/100	S	D	C	B	72
VAN	195		14	106/104	S	D	C	B	72
VAN	195		15	106/104	S	D	C	B	72

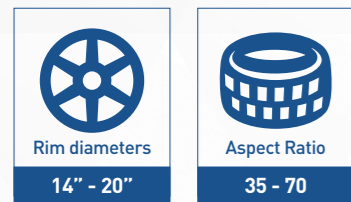
SeasonX TA01

PAGE 56



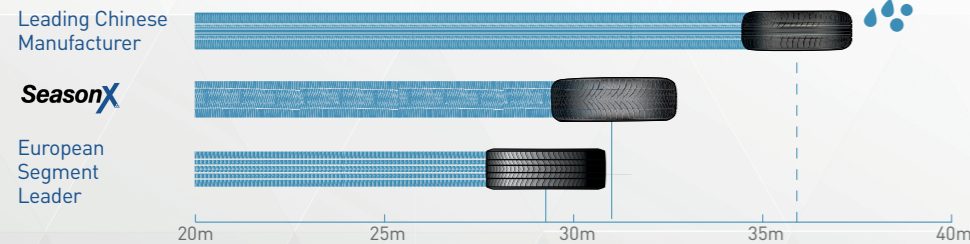
- The SeasonX is an all season tire developed to simplify ownership in geographies where winter fitment is required by law and/or necessary
- Providing excellent performance in both summer and winter conditions, the SeasonX features a combination of state-of-the-art tread, compounding and carcass design

ENGINEERED IN
EUROPE

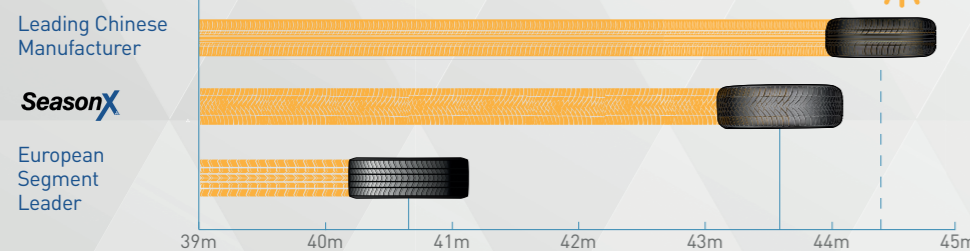


Performance

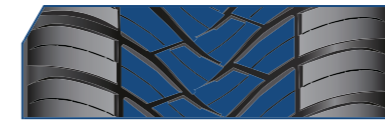
Wet Braking



Dry Braking

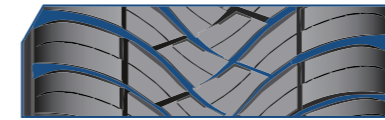


Features and Benefits



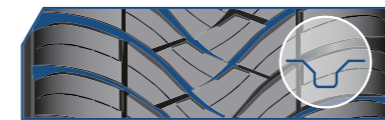
Solid central part geometry

For good directional driving and handling, resulting in good wet and dry handling properties.



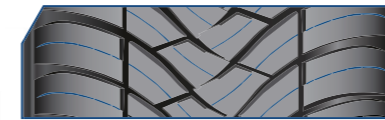
Directional V-shaped grooves

For efficient water slush dispersion, resulting in confident safe driving in wet and snow.



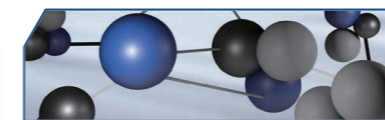
Asymmetric groove shape

For stabilized tread block, resulting in improved braking performance.



Strategically placed sipes

For improved traction on snow and ice, resulting in superior driving safety.



Advanced renewable silica - silane polymers featuring renewable raw materials

For enhanced sustainability, resulting in excellent all round winter and summer performance.









Balanced polyester fiber matrix

For better uniformity in tire, resulting in comfort in different road conditions.

Product Specifications




Segment	Width	Ratio	Rim	LI	SI	XL				Noise
CAR	235	35	19	91	W	XL	D	B	B	72
CAR	255	35	19	96	Y	XL	C	B	B	73
CAR	225	40	18	92	Y	XL	D	B	B	72
CAR	235	40	18	95	Y	XL	C	B	B	72
CAR	245	40	18	97	Y	XL	C	B	B	72
CAR	235	40	19	96	Y	XL	D	B	B	72
CAR	205	45	16	87	W	XL	C	B	B	72
CAR	215	45	16	90	V	XL	C	B	B	72
CAR	205	45	17	88	W	XL	D	B	B	72
CAR	215	45	17	91	W	XL	D	B	B	72

Segment	Width	Ratio	Rim	LI	SI	XL				Noise
CAR	225	45	17	94	W	XL	C	B	B	72
CAR	235	45	17	97	Y	XL	D	B	B	72
CAR	215	45	18	93	V	XL	C	B	B	72
CAR	225	45	18	95	Y	XL	C	B	B	72
CAR	235	45	18	98	Y	XL	C	B	B	72
CAR	245	45	18	100	W	XL	C	B	B	71
CAR	225	45	19	96	Y	XL	C	B	B	72
CAR	245	45	19	102	Y	XL	C	B	B	72
CAR	195	50	15	82	V		D	B	B	71
CAR	195	50	16	88	V	XL	C	B	B	72
CAR	205	50	16	91	W	XL	D	B	B	72
CAR	205	50	17	93	V	XL	C	B	B	72
CAR	215	50	17	95	W	XL	C	B	B	72
CAR	225	50	17	98	W	XL	D	B	B	72
CAR	185	55	15	86	H	XL	C	B	B	71
CAR	195	55	15	89	V	XL	C	B	B	72
CAR	185	55	16	87	V	XL	C	B	B	71
CAR	195	55	16	91	V	XL	C	B	B	72
CAR	205	55	16	94	V	XL	C	B	B	72
CAR	215	55	16	97	V	XL	C	B	B	72
CAR	225	55	16	99	V	XL	C	B	B	72
CAR	205	55	17	95	V	XL	C	B	B	72
CAR	215	55	17	98	W	XL	C	B	B	72
CAR	225	55	17	101	W	XL	C	B	B	72
CAR	195	55	20	95	H	XL	C	B	B	72
CAR	165	60	14	79	T	XL	D	C	B	70
CAR	185	60	14	82	H		D	B	B	70
CAR	155	60	15	74	T		D	C	B	70
CAR	165	60	15	77	H		D	C	B	70
CAR	185	60	15	88	H	XL	C	B	B	71
CAR	195	60	15	92	V	XL	C	B	B	72
CAR	195	60	16	93	V	XL	C	B	B	72
CAR	205	60	16	96	V	XL	C	B	B	72
CAR	215	60	16	99	V	XL	C	B	B	72
CAR	235	60	16	100	V		C	B	B	71
CAR	155	65	14	75	T		D	C	B	70

Segment	Width	Ratio	Rim	LI	SI	XL				Noise
CAR	165	65	14	79	T		C	C	B	70
CAR	175	65	14	86	H	XL	C	C	B	71
CAR	185	65	14	86	H		D	B	B	70
CAR	165	65	15	85	H	XL	D	C	B	71
CAR	175	65	15	84	H		C	C	B	70
CAR	185	65	15	88	H		C	B	B	70
CAR	195	65	15	95	V	XL	C	B	B	72
CAR	205	65	15	99	V	XL	C	B	B	72
CAR	165	70	14	85	T	XL	C	C	B	71
CAR	175	70	14	88	T	XL	C	C	B	71
CAR	185	70	14	88	H		D	B	B	70
CAR	195	70	14	91	T		C	B	B	71

Product Specifications

SUV

Segment	Width	Ratio	Rim	LI	SI	XL				Noise
SUV	255	45	19	104	Y	XL	C	B	B	73
SUV	215	50	18	92	W	XL	C	B	B	72
SUV	225	50	18	99	W	XL	C	B	B	72
SUV	235	50	18	101	Y	XL	C	B	B	72
SUV	235	55	17	103	Y	XL	D	B	B	72
SUV	215	55	18	99	V	XL	C	B	B	72
SUV	225	55	18	102	V	XL	C	B	B	72
SUV	235	55	18	104	W	XL	C	B	B	72
SUV	225	55	19	99	W		C	B	B	71
SUV	235	55	19	105	W	XL	B	B	B	72
SUV	215	60	17	100	V	XL	C	B	B	72
SUV	225	60	17	103	V	XL	C	B	B	72
SUV	235	60	18	107	W	XL	C	B	B	72
SUV	215	65	16	102	H	XL	C	B	B	72
SUV	215	65	17	103	V	XL	B	B	B	72
SUV	225	65	17	106	V	XL	C	B	B	72
SUV	235	65	17	108	W	XL	C	B	B	72

WinterX TW401

PAGE 62



SNOWLINK PL02

PAGE 64

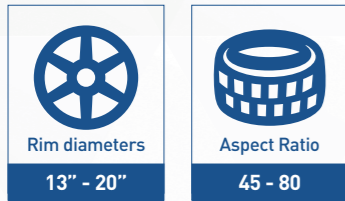


SNOWLION TR777

PAGE 68



- Directional pattern for central European winter
- Excellent handling performance on icy and snowy roads
- Class beating wet performance
- Low noise and comfort



Features and Benefits



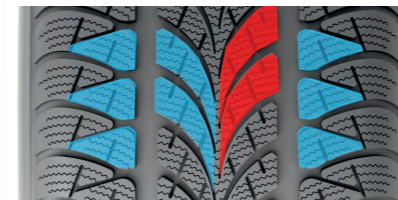
Two ultra-wide longitudinal pattern grooves

Effectively drain water to avoid water film phenomenon, resulting in excellent wet braking and handling performance.



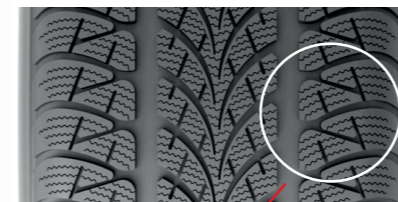
Extra wide tread design

Ultra-wide foot print, resulting in excellent handling in all conditions.



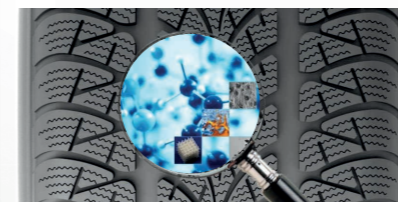
Optimized pattern pitch arrangement

Pattern noise reduction, resulting in good acoustic comfort.



Compact 3D steel sheet and multiple pattern groove cross design

Improved grip on ice and snow, resulting in excellent braking and acceleration in snowy and icy conditions.



New generation high-performance tread formula

New generation compound with functionalized polystyrene butadiene rubber and high-dispersion white carbon black. Excellent wet, snow and dry braking performance with reduced rolling resistance, resulting in enhanced safety whilst making vehicles more energy efficient.

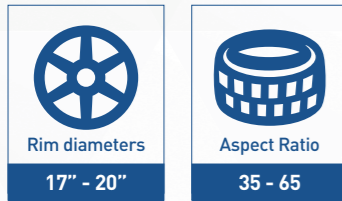
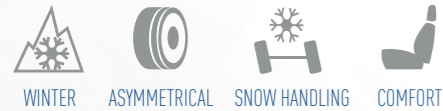
Product Specifications



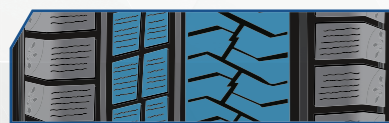
Segment	Width	Ratio	Rim	LI	SI	XL				Noise
CAR	195	45	16	84	H	XL	D	C	B	71
CAR	205	45	17	88	V	XL	D	C	B	72
CAR	215	45	17	91	V	XL	D	C	B	72
CAR	225	45	17	94	V	XL	D	C	B	72
CAR	245	45	19	102	V	XL	C	C	B	71
CAR	195	50	15	82	H		D	C	B	71
CAR	195	50	16	88	H	XL	E	C	B	72
CAR	205	50	17	93	V	XL	D	C	B	72
CAR	215	50	17	95	V	XL	D	C	B	72
CAR	225	50	17	98	V	XL	C	C	B	72
CAR	185	55	15	86	H	XL	E	C	B	71
CAR	195	55	15	85	H		E	C	B	71
CAR	195	55	16	91	H	XL	E	C	B	72
CAR	205	55	16	94	V	XL	D	C	B	72
CAR	215	55	16	97	V	XL	D	C	B	72
CAR	225	55	16	99	V	XL	C	C	B	72
CAR	205	55	17	95	V	XL	D	C	B	72
CAR	215	55	17	98	V	XL	D	C	B	72
CAR	225	55	17	101	V	XL	D	C	B	72
CAR	205	55	19	97	V	XL	D	C	B	72
CAR	195	55	20	95	H	XL	D	C	B	72
CAR	165	60	15	81	T	XL	D	C	B	71
CAR	185	60	15	88	H	XL	E	C	B	71
CAR	195	60	15	88	T		D	C	B	71
CAR	195	60	16	89	H		D	C	B	71
CAR	205	60	16	96	H	XL	D	C	B	72
CAR	215	60	16	99	H	XL	D	C	B	72
CAR	225	60	16	102	V	XL	C	C	B	72
CAR	155	65	14	75	T		E	D	B	70
CAR	165	65	14	79	T		E	C	B	70
CAR	165	65	15	81	T		E	C	B	70

Segment	Width	Ratio	Rim	LI	SI	XL				Noise
CAR	175	65	15	84	T		E	C	B	70
CAR	185	65	15	88	H		E	C	B	70
CAR	185	65	15	92	T	XL	E	C	B	71
CAR	195	65	15	91	H		E	C	B	71
CAR	195	65	15	95	T	XL	E	C	B	72
CAR	185	70	14	88	T		D	C	B	70
CAR	155	80	13	79	T		E	D	B	70

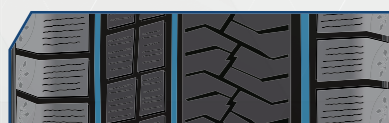
- Asymmetrical winter tire offering excellent comfort and outstanding high speed performance
- Excellent grip
- Best traction and handling
- Braking performance on icy and snowy roads



Features and Benefits



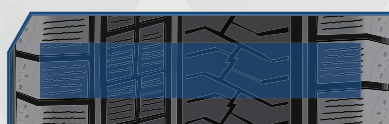
Left-right asymmetrical design
Improved handling with high performance on ice and snow.



Three zigzag groove design
Improved mobility and drainage, performance on bad road conditions.



Constructed with fine and closed 3D blade grooves
Improved grip performance in mud and ice-snow conditions.

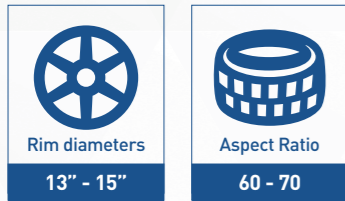


Structure Design
Wider tread with larger footprint to increase the tire contact area, resulting in enhanced traction performance and mileage.

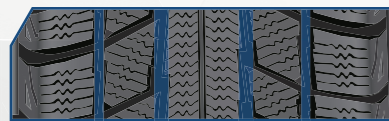
Product Specifications

Segment	Width	Ratio	Rim	LI	SI	XL				Noise
CAR	225	35	19	88	W	XL	D	D	B	72
CAR	235	35	19	91	W	XL	D	C	B	72
CAR	245	35	19	93	W	XL	D	C	B	72
CAR	255	35	19	96	V	XL	D	C	B	73
CAR	275	35	19	100	W	XL	C	C	B	73
CAR	245	35	20	95	W	XL	D	C	B	72
CAR	255	35	20	97	W	XL	D	C	B	73
CAR	275	35	20	102	V	XL	D	C	B	73
CAR	225	40	18	92	V	XL	D	C	B	72
CAR	235	40	18	95	V	XL	D	C	B	72
CAR	245	40	18	97	V	XL	D	C	B	72
CAR	255	40	18	99	V	XL	D	C	B	73
CAR	225	40	19	93	V	XL	E	D	B	72
CAR	235	40	19	96	W	XL	E	C	B	72
CAR	245	40	19	98	V	XL	D	C	B	72
CAR	255	40	19	100	V	XL	D	C	B	73
CAR	245	40	20	99	V	XL	D	C	B	72
CAR	265	40	20	104	V	XL	D	C	B	73
CAR	235	45	17	97	V	XL	D	C	B	72
CAR	245	45	17	99	V	XL	D	C	B	72
CAR	225	45	18	95	V	XL	C	D	B	72
CAR	235	45	18	98	V	XL	D	C	B	72
CAR	245	45	18	100	V	XL	D	C	B	72
CAR	255	45	18	103	V	XL	C	C	B	73
Car	225	45	19	96	V	XL	D	C	B	72
CAR	235	45	19	99	V	XL	D	C	B	72
CAR	245	45	19	102	V	XL	C	C	B	72
CAR	245	65	17	111	H	XL	C	C	B	72

- Silica compound for anti sliding performance
- Self locking sipes configuration for a great performance and best handling on wet and snowy roads
- Directional V -type tread design to maximize traction on snow and slush
- Improved straight handling at high speed thanks to continuous center line rib design



Features and Benefits



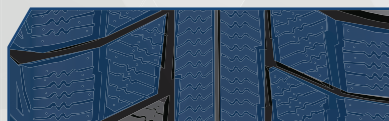
Zigzag grooves design with increased number of binding edges

Excellent snow traction and handling.



Tread design featuring self-locking sipe configuration for higher stiffness

Excellent braking performance and handling.



Directional pattern with

Improved high speed straight handling and aquaplaning performance.



Optimised high dispersion silica compound

Improved anti-skidding performance in cold weather.

Product Specifications

Segment	Width	Ratio	Rim	LI	SI	XL				Noise
CAR	185	60	14	82	T		D	D	B	70
CAR	195	60	14	86	T		D	D	B	71
CAR	175	65	14	86	T	XL	D	D	B	71
CAR	185	65	14	86	T		C	D	B	70
CAR	205	65	15	99	T	XL	D	D	B	72
CAR	155	70	13	75	T		E	E	B	70
CAR	165	70	13	79	T		D	E	B	70
CAR	175	70	13	82	T		D	D	B	70
CAR	165	70	14	81	T		D	E	B	70
CAR	175	70	14	88	T	XL	D	D	B	71
CAR	205	70	15	96	T		D	D	B	71

WinterX TW401

PAGE 72



SNOWLINK PL02

PAGE 74

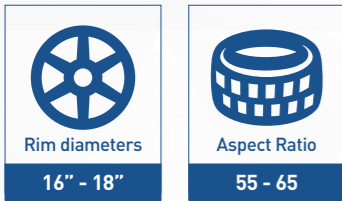


SNOWLION TR777

PAGE 76



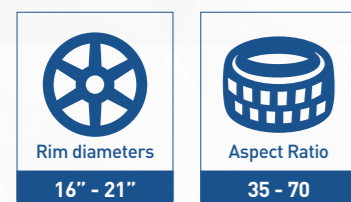
- The directional winter pattern for the SUV segment, ideal for mild to moderate winter climates in Europe
- Cutting edge tire technology offering class beating wet performances, handling and comfort



Product Specifications

Segment	Width	Ratio	Rim	LI	SI	XL				Noise
SUV	215	55	18	99	V	XL	D	C	B	72
SUV	215	60	17	100	V	XL	C	C	B	72
SUV	225	60	17	103	V	XL	C	C	B	72
SUV	215	65	16	102	H	XL	C	C	B	72
SUV	215	65	17	99	V		C	C	B	71
SUV	225	65	17	106	H	XL	C	C	B	72

- Asymmetrical winter tire offering excellent comfort and outstanding high speed performance
- Excellent grip, best traction and shorten braking distance on icy and snowy roads
- Specially developed for SUVs

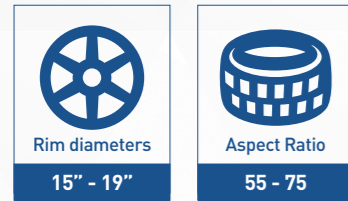


Product Specifications

Segment	Width	Ratio	Rim	LI	SI	XL				Noise
SUV	315	35	20	110	V	XL	D	C	B	72
SUV	295	35	21	107	V	XL	C	C	B	75
SUV	275	40	19	105	V	XL	D	C	B	73
SUV	255	40	20	101	W	XL	C	C	B	73
SUV	275	40	20	106	V	XL	D	C	B	73
SUV	295	40	20	110	V	XL	C	C	B	75
SUV	275	40	21	107	V	XL	C	C	B	73
SUV	255	45	19	104	V	XL	D	C	B	73
SUV	245	45	20	103	V	XL	D	C	B	72
SUV	255	45	20	105	V	XL	C	C	B	73

Segment	Width	Ratio	Rim	LI	SI	XL				Noise
SUV	265	45	20	108	V	XL	C	C	B	73
SUV	275	45	20	110	W	XL	D	C	B	73
SUV	275	45	21	110	V	XL	C	C	B	73
SUV	215	50	18	96	V	XL	C	E	B	72
SUV	225	50	18	99	V	XL	D	C	B	72
SUV	235	50	18	101	V	XL	C	C	B	72
SUV	245	50	18	104	V	XL	D	C	B	72
SUV	235	50	19	103	H	XL	D	C	B	72
SUV	245	50	19	105	V	XL	C	C	B	72
SUV	255	50	19	107	V	XL	C	C	B	73
SUV	265	50	19	110	V	XL	C	C	B	73
SUV	255	50	20	109	V	XL	C	C	B	73
SUV	265	50	20	111	V	XL	C	C	B	73
SUV	275	50	20	113	V	XL	B	C	B	73
SUV	285	50	20	116	H	XL	D	C	B	75
SUV	225	55	18	102	V	XL	D	C	B	72
SUV	235	55	18	104	V	XL	C	C	B	72
SUV	255	55	18	109	V	XL	C	C	B	73
SUV	225	55	19	99	H		D	C	B	71
SUV	235	55	19	105	V	XL	C	C	B	72
SUV	255	55	19	111	V	XL	C	C	B	73
SUV	235	55	20	105	V	XL	C	D	B	72
SUV	255	55	20	110	V	XL	C	C	B	73
SUV	235	60	17	106	H	XL	C	C	B	72
SUV	225	60	18	104	V	XL	C	D	B	72
SUV	235	60	18	107	V	XL	C	D	B	72
SUV	255	60	18	112	V	XL	C	C	B	73
SUV	265	60	18	114	H	XL	D	C	B	73
SUV	285	60	18	120	H	XL	D	C	B	73
SUV	235	65	17	108	V	XL	C	D	B	72
SUV	255	65	17	114	H	XL	C	C	B	73
SUV	245	70	16	111	H	XL	C	C	B	72
SUV	265	70	16	112	T		C	C	B	72
SUV	265	70	18	116	T		C	C	B	72

- Silica compound for anti sliding performance
- Self locking sipes configuration for a great performance and best handling on wet and snowy roads
- Directional V -type tread design to maximize traction on snow and slush
- Improved straight handling at high speed thanks to continuous center line rib design
- Specially developed for SUVs



Product Specifications

Segment	Width	Ratio	Rim	LI	SI	XL				Noise
SUV	235	55	17	103	V	XL	D	D	B	72
SUV	245	55	19	103	H		D	D	B	72
SUV	225	60	17	99	H		D	D	B	71
SUV	255	65	16	109	H		D	D	B	72
SUV	215	70	15	98	T		C	D	B	71
SUV	215	70	16	104	T	XL	D	D	B	72
SUV	225	70	16	107	H	XL	D	D	B	72
SUV	235	70	16	106	H		D	D	B	71
SUV	215	75	15	100	S		D	D	B	72
SUV	235	75	15	105	T		D	D	B	71

SNOWLINK LL01

PAGE 80

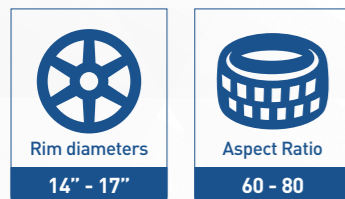


TR737

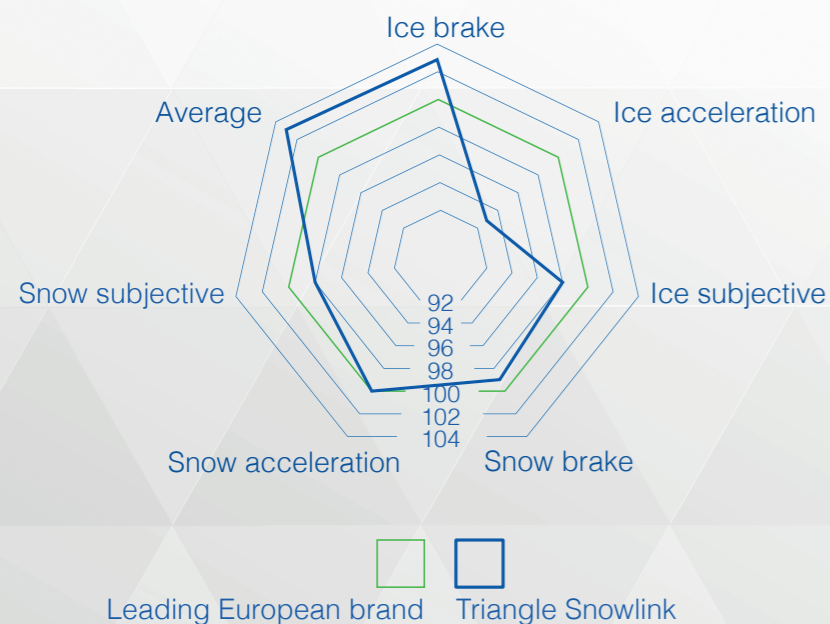
PAGE 82



- High traction on ice and snow thanks to large shoulder blocks and high sipes density
- Improved grip and driving capabilities due to zig-zag shoulders design
- Water and slush evacuation thanks to wide circumferential and radial grooves



Performance



Features and Benefits



Deep symmetrical tire with V-type main grooves and zigzag shoulder grooves design

Excellent snow traction and drivability.



High sipes density

Enhanced traction in winter conditions.



Wider tread and large footprint for an increased tire contact area

Enhanced ice traction performance and improved mileage.



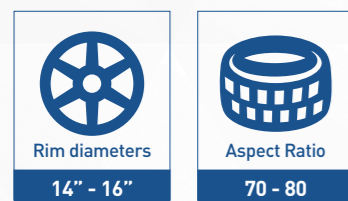
Optimised high dispersion silica compound

Improved anti-skidding performance in cold weather.

Product Specifications

Segment	Width	Ratio	Rim	LI	SI	XL				Noise
VAN	195	60	16	99/97	H		E	D	B	73
VAN	215	60	16	103/101	H		E	D	B	73
VAN	215	60	17	109/107	T		E	D	B	73
VAN	195	65	16	104/102	T	XL	E	D	B	73
VAN	205	65	16	107/105	T		E	D	B	73
VAN	215	65	16	109/107	Q		E	D	B	72
VAN	225	65	16	112/110	T		E	D	B	73
VAN	235	65	16	115/113	R		E	D	B	71
VAN	195	70	15	104/102	Q		E	D	B	73
VAN	215	70	15	109/107	S		D	D	B	73
VAN	225	70	15	112/110	R		E	D	B	73
VAN	195	75	16	107/105	Q		D	D	B	73
VAN	205	75	16	113/111	R		D	D	B	73
VAN	215	75	16	113/111	Q		E	D	B	73
VAN	225	75	16	121/120	R		E	D	B	73
VAN	195		14	106/104	Q		E	D	B	73
VAN	185		15	103/102	Q		E	D	B	73

- Increase of tread rigidity from center to shoulders in order to give good pressure distribution and handling in cornering
- Tread shoulders large block design to ensure longer mileage
- Three circumferential main grooves to improve stability, traction and reduced braking distance on ice and snow



Features and Benefits



Three circumferential main grooves

Braking performance, stability and traction on ice and snow.



Robust shoulder design

Uniform treadwear and extended tire life.



Even pressure distribution

Improved driving and handling performance.



Optimised high dispersion silica compound

Improved grip in cold weather conditions.

Product Specifications

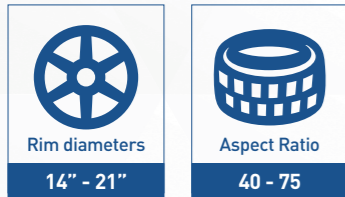
Segment	Width	Ratio	Rim	LI	SI	XL				Noise
VAN	215	70	16	106/102	Q		D	C	B	73
VAN	185	75	16	104/102	Q		D	C	B	73
VAN	185		14	102/100	Q		E	C	B	73

SNOWLINK PL01

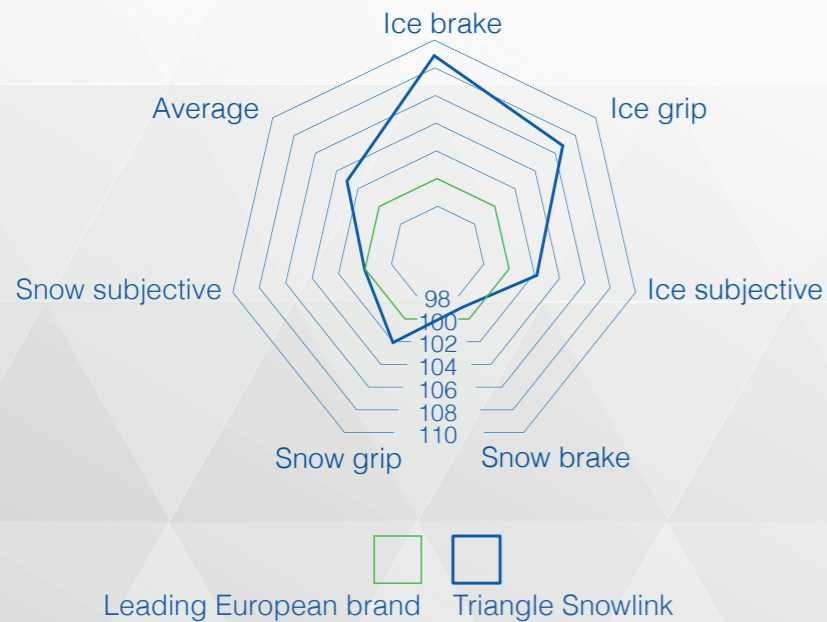
PAGE 86



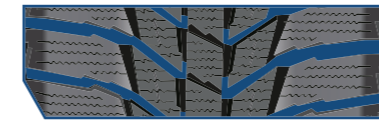
- Snowlink PL01 is designed for driving in extreme winter conditions
- Directional pattern with straight center line rib aimed to improve handling at high speed
- Longer mileage and uniform wear thanks to optimized tire structure design



Performance

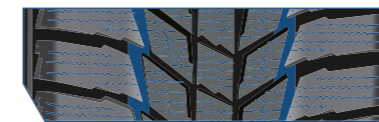


Features and Benefits



V-type and variable depth directional grooves

High resistance to aquaplaning, resulting in improved handling in deep water and slush conditions.



Staggered block arrangement and high radial sipe density

Enhanced traction, resulting in greater braking performance on snow and ice.



Directional pattern with straight center line rib design

Increased center line rigidity, resulting in good straight-line handling at high speed.



Optimised high dispersion silica compound

Improved anti-skidding performance on ice and snow.



Optimized multi-pitch shoulder block sequence design

Smooth transition between blocks, resulting in improved acoustic comfort.

Product Specifications

CAR



Segment	Width	Ratio	Rim	LI	SI	XL				Noise
CAR	225	40	18	92	R	XL	D	E	B	72
CAR	235	40	18	95	R	XL	D	D	B	72
CAR	215	45	17	91	R	XL	D	D	B	72
CAR	225	45	17	94	R	XL	D	D	B	72
CAR	235	45	17	97	R	XL	D	D	B	72
CAR	235	45	18	98	R	XL	D	D	B	72
CAR	245	45	18	100	R	XL	D	D	B	72
CAR	205	50	16	91	T	XL	D	D	B	72
CAR	205	50	17	93	R	XL	D	D	B	72
CAR	215	50	17	95	R	XL	D	D	B	72
CAR	225	50	17	98	R	XL	D	D	B	72
CAR	185	55	15	86	T	XL	E	D	B	71
CAR	195	55	15	89	R	XL	D	D	B	72
CAR	195	55	16	91	R	XL	D	D	B	72
CAR	205	55	16	94	R	XL	D	D	B	72
CAR	215	55	16	97	R	XL	D	D	B	72
CAR	225	55	16	99	R	XL	D	D	B	72
CAR	215	55	17	98	R	XL	C	D	B	72
CAR	225	55	17	101	R	XL	D	D	B	72
CAR	215	55	18	99	R	XL	D	D	B	72
CAR	235	55	19	105	R	XL	C	D	B	72
CAR	165	60	14	79	R	XL	D	D	B	71
CAR	185	60	15	88	R	XL	D	D	B	71
CAR	195	60	15	92	R	XL	D	D	B	72
CAR	205	60	15	95	R	XL	D	D	B	72
CAR	195	60	16	93	R	XL	C	D	B	72
CAR	205	60	16	96	R	XL	D	D	B	72
CAR	215	60	16	99	R	XL	D	D	B	72
CAR	185	65	15	92	R	XL	D	D	B	71
CAR	195	65	15	95	R	XL	D	D	B	72
CAR	205	65	15	99	R	XL	D	D	B	72
CAR	185	70	14	92	R	XL	C	D	B	71

Product Specifications

SUV

Segment	Width	Ratio	Rim	LI	SI	XL				Noise
SUV	275	45	21	110	R	XL	D	D	B	72
SUV	235	50	18	101	R	XL	D	D	B	72
SUV	255	50	19	107	R	XL	D	D	B	73
SUV	245	50	20	102	T		D	D	B	71
SUV	225	55	18	102	R	XL	D	D	B	72
SUV	255	55	19	111	R	XL	D	D	B	73
SUV	255	55	20	110	R	XL	D	D	B	72
SUV	235	60	16	104	R	XL	D	D	B	72
SUV	225	60	17	103	R	XL	D	D	B	72
SUV	225	60	18	104	R	XL	D	D	B	72
SUV	235	60	18	107	R	XL	D	D	B	72
SUV	215	65	16	102	R	XL	D	D	B	72
SUV	215	65	17	99	T		D	D	B	71
SUV	225	65	17	106	R	XL	D	D	B	72
SUV	235	65	17	108	R	XL	D	D	B	72
SUV	235	65	18	110	T	XL	C	D	B	72
SUV	225	70	16	107	R	XL	D	D	B	72
SUV	235	70	16	109	R	XL	D	D	B	72
SUV	245	70	17	110	T		C	D	B	71
SUV	265	70	17	115	T		C	D	B	72
SUV	245	75	16	111	T		D	D	B	71

IcelynX TI501

PAGE 92

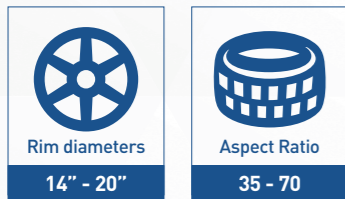


ICELINK PS01

PAGE 96



- Nordic winter tire with high density of studs
- Excellent handling performance on icy and snowy roads
- Great and snow and ice acceleration



Features and Benefits



Double tread radius tread shape

Increased shoulder stability and improved tread center stiffness, resulting in enhanced cornering, stability and grip.



Laterally interconnected tread geometry

Excellent lateral stiffness, resulting in good steering accuracy.



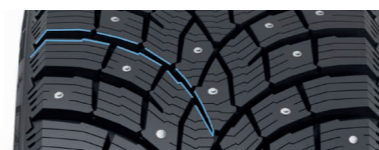
Tread-wide studs distribution

Maximum grip thanks to the synergic independent work of each stud, resulting in superior braking and acceleration performance in icy and snowy conditions.



Lighter stud design

Superior braking and acceleration performance in icy and snowy conditions, resulting in minimized road surface damage.



Pattern with wide V-grooves design

Superior braking and handling performance in icy and snowy conditions, resulting in excellent water and slush drainage.

Product Specifications

CAR



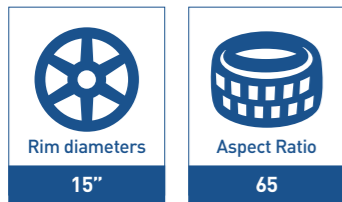
Segment	Width	Ratio	Rim	LI	SI	XL				Noise
CAR	235	35	19	91	T	XL	D	C	B	72
CAR	225	40	18	92	T	XL	D	C	B	72
CAR	225	45	17	94	T	XL	C	C	B	72
CAR	225	45	18	95	T	XL	C	D	B	72
CAR	235	45	18	98	T	XL	C	C	B	72
CAR	245	45	18	100	T	XL	C	C	B	72
CAR	205	50	17	93	T	XL	C	D	B	72
CAR	215	50	17	95	T	XL	C	D	B	72
CAR	225	50	17	98	T	XL	C	C	B	72
CAR	205	55	16	94	T	XL	C	D	B	72
CAR	215	55	16	97	T	XL	D	D	B	72
CAR	225	55	16	99	T	XL	C	C	B	72
CAR	215	55	17	98	T	XL	C	D	B	72
CAR	225	55	17	101	T	XL	C	C	B	72
CAR	185	60	14	86	T	XL	D	D	B	71
CAR	185	60	15	88	T	XL	D	D	B	71
CAR	195	60	15	92	T	XL	D	D	B	72
CAR	205	60	16	96	T	XL	C	D	B	72
CAR	215	60	16	99	T	XL	C	D	B	72
CAR	155	65	14	75	T		E	D	B	70
CAR	175	65	14	86	T	XL	D	D	B	71
CAR	185	65	14	90	T	XL	D	D	B	71
CAR	175	65	15	88	T	XL	D	D	B	71
CAR	185	65	15	92	T	XL	D	D	B	71
CAR	195	65	15	95	T	XL	C	D	B	72
CAR	205	65	15	99	T	XL	D	D	B	72
CAR	205	65	16	95	T		C	D	B	71
CAR	175	70	14	88	T	XL	D	D	B	71
CAR	205	70	15	100	T	XL	C	D	B	72

Product Specifications

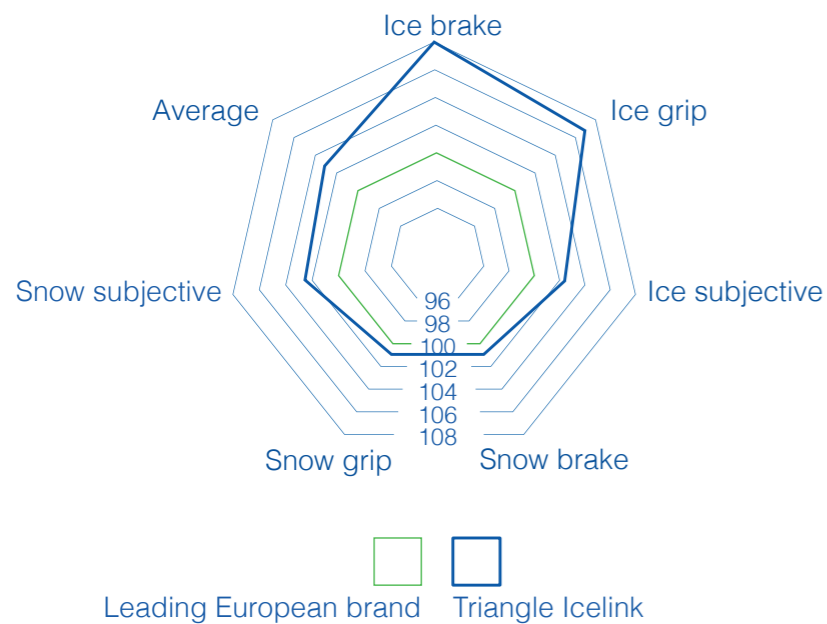
SUV

Segment	Width	Ratio	Rim	LI	SI	XL				Noise
SUV	275	40	20	106	T	XL	C	C	B	72
SUV	225	55	18	102	T	XL	C	C	B	72
SUV	235	55	18	104	T	XL	C	C	B	72
SUV	255	55	18	109	T	XL	C	C	B	73
SUV	235	55	19	105	T	XL	C	C	B	72
SUV	215	60	17	100	T	XL	D	D	B	72
SUV	225	60	17	103	T	XL	C	C	B	72
SUV	235	60	17	106	T	XL	C	C	B	72
SUV	225	60	18	104	T	XL	C	C	B	72
SUV	235	60	18	107	T	XL	C	C	B	72
SUV	265	60	18	114	T	XL	C	C	B	73
SUV	215	65	16	102	T	XL	C	D	B	72
SUV	225	65	17	106	T	XL	C	C	B	72
SUV	235	65	17	108	T	XL	C	C	B	72
SUV	245	65	17	111	T	XL	C	C	B	72
SUV	255	65	17	114	T	XL	C	C	B	73
SUV	265	65	17	116	T	XL	C	C	B	73
SUV	265	65	18	114	T		C	C	B	72
SUV	215	70	16	104	T	XL	C	D	B	72
SUV	255	70	18	113	T		C	C	B	72

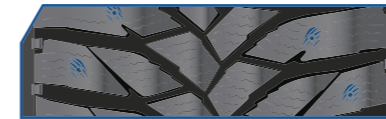
- IceLink PS01 winter studdable tire is designed to provide maximum grip in the most demanding conditions, especially in sustained periods of sub zero temperatures and icy roads
- The directional tread design and optimized stud sequence leads to improved grip on snowy roads
- The special silica compound formula has been particularly designed to perform in sub-zero conditions



Performance

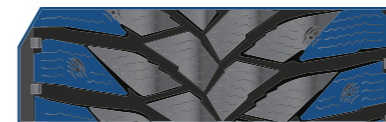


Features and Benefits



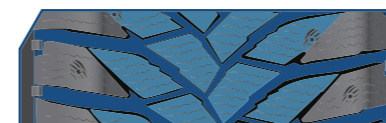
Optimized stud arrangement and new stud hole design

Resulting in excellent retention and improved grip on icy and compact snow roads.



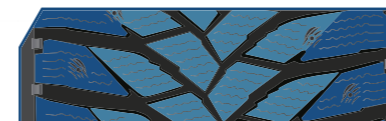
High radial sipes density and "zigzag" small groove design

Extreme grip on road, resulting in higher traction on ice and snow surfaces.



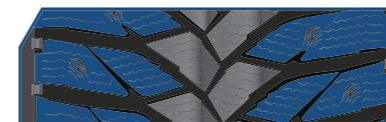
Directional tread design with large evacuation channels

Better performance on snow, resulting in improved slush and water evacuation.



Tread rigidity gradually increases from center to shoulders

Good pressure distribution. Reliable handling stability in straight line and cornering condition.



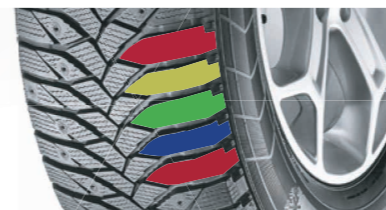
Radial shoulder block and large block design

Uniform wear, resulting in longer mileage.



Optimized high dispersion silica compound

Improved grip and handling stability in different cornering conditions.



Optimized multi-pitch sequence design

Smooth transition between blocks and shifted resonance frequency, resulting in improved acoustic comfort.

Product Specifications

CAR



Segment	Width	Ratio	Rim	LI	SI	XL				Noise
CAR	205	65	15	99	T	XL	D	D	B	72

Tire marking

Load & Speed Index

M+S = The letters indicate a tire suitable for mud and snow use.



Load Index

LI	KG	LI	KG	LI	KG	LI	KG
50	190	76	400	102	850	128	1800
51	195	77	412	103	875	129	1850
52	200	78	425	104	900	130	1900
53	206	79	437	105	925	131	1950
54	212	80	450	106	950	132	2000
55	218	81	462	107	975	133	2060
56	224	82	475	108	1000	134	2120
57	230	83	487	109	1030	135	2180
58	236	84	500	110	1060	136	2240
59	243	85	515	111	1090	137	2300
60	250	86	530	112	1120	138	2360
61	257	87	545	113	1150	139	2430
62	265	88	560	114	1180	140	2500
63	272	89	580	115	1215	141	2575
64	280	90	600	116	1250	142	2650
65	290	91	615	117	1285	143	2725
66	300	92	630	118	1320	144	2800
67	307	93	650	119	1360	145	2900
68	315	94	670	120	1400	146	3000
69	325	95	690	121	1450	147	3075
70	335	96	710	122	1500	148	3150
71	345	97	730	123	1550	149	3250
72	355	98	750	124	1600	150	3350
73	365	99	775	125	1650	151	3450
74	375	100	800	126	1700	152	3550
75	387	101	825	127	1750	153	3650

Speed Index

Speed Ratings	L	M	N	P	Q	R	S
Max Speed Km/hr	120	130	140	150	160	170	180

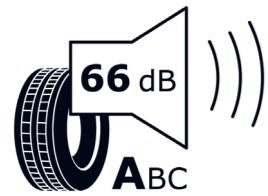
Speed Ratings	T	U	H	V	W	Y
Max Speed Km/hr	190	200	210	240	270	300



3 peak mountain snowflake is used to indicate winter tires

European Tire Labelling

This initiative is aimed at increasing tire safety, environmental and cost efficiency, allowing tire fitters and end users to make more informed decisions based on additional information provided together with the product.



NOISE

External noise is described as an absolute value in decibel and as a 3 classes sound wave symbol. The noise is a major factor in terms of environmental issue. The symbol in decibel is usually indicated in the lower part of the tire label. The label displays sound waves from 1 (lowest noise) to 3 (highest noise).

1 SOUND WAVE

best level performance

2 SOUND WAVES

compliant with European limit - average level performance

3 SOUND WAVES

compliant with European limit - lowest level performance.

All three levels are still compliant with current European limits.



ROLLING RESISTANCE (FUEL EFFICIENCY)

Rolling resistance (RR) is the main key factor in measuring the energy efficiency of a tire and has direct influence on the fuel consumption of a vehicle.



WET GRIP

Wet grip is the most important and demanding safety issue. Driving on wet roads require excellent grip and shorter braking distance. The wet grip value in the label is an element of braking performance and is, usually, considered by consumers and trade an indicator of safety. G is the minimum level of performance expected.



Tips for a driving



- Regularly check the tire inflation, at least once a month.
- Never reduce the inflation pressure on warm tires.
- Observe tire pressures and loading condition in the operating instructions for each respective axle.
- Do not unscrew the sealing caps.
- Drive at moderate speed on new tires for the first 200 km.
- For tires with speed rating H / V / W / Y / ZR limit the speed to the first 50 km.
- Always check wheel balancing and after assembling the wheels, check the wheel nuts / bolts for a tight fit after approximately 100 km.
- In case of impact caused by holes or other obstacles on the road the tire could suffer a damage which is not visible with the naked eye. In such cases, the tire must be checked internally and externally.
- Regularly check the tread depth of the tires. The lower the tread depth, the higher is the risk of skidding on wet roads. The tread depth must never be less than the legally prescribed minimum value of 1.6 mm. To ensure additional safety, particularly in case of bad weather conditions, tires should be replaced at the tread depth of 3 mm or less.
- To ensure consistently good driving characteristics, the tires should be switched every 10,000 km between front and rear wheels.
- In the case of uneven wear, check the tires and have them replaced if necessary.
- In the case of vehicles which have been parked or laid down for a long period, check the tire pressure and increase it if necessary.



Triangle Tyre Co., Ltd
Via Mauro Macchi, 27
20124 MILAN - ITALY

www.triangle.com.cn
info@triangle-eu.com